

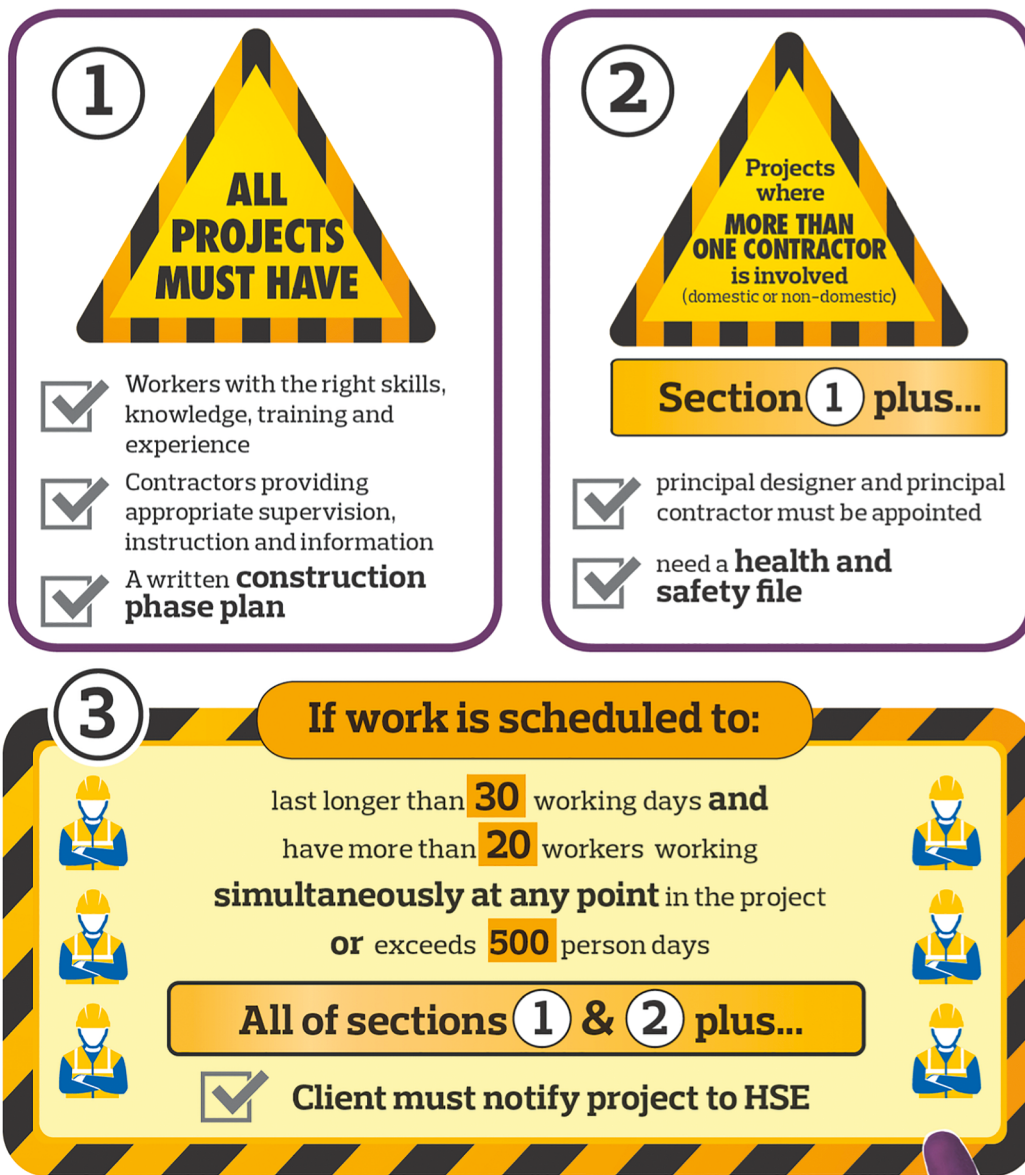


## Construction (Design and Management) Regulations (CDM 2015)

The Construction (*Design and Management*) Regulations (CDM 2015) are the main set of regulations for managing the health, safety and welfare on construction projects. CDM applies to all building and construction work and includes new build, refurbishment, repair and maintenance. If you are working for a domestic client, you will be in control of the project and take on the client responsibilities if you are the only contractor; the graphic below sets out the simple steps you need to take to ensure compliance.

A written construction phase plan is required for every construction project. This does not need to be complicated and mobile apps such as the CITB's CDM Wizard for Apple<sup>1</sup> or Android<sup>2</sup> devices can simplify the process, or if you are not technically minded, the HSE have a construction phase plan<sup>3</sup> template which can be downloaded.

If you require any further information, advice or guidance regarding your responsibilities under CDM when planning work, contact the NFRC Helpdesk<sup>4</sup> to speak to a member of the NFRC Technical Team.





### Further information

<sup>1</sup> CITB CDM Wizard for Apple iOS:

<https://itunes.apple.com/gb/app/cdm-wizard/id974674223>

<sup>2</sup> CITB CDM Wizard for Android:

[https://play.google.com/store/apps/details?id=co.uk.citb.cdmwizard&hl=en\\_GB](https://play.google.com/store/apps/details?id=co.uk.citb.cdmwizard&hl=en_GB)

<sup>3</sup> HSE Construction Phase Plan :

<https://www.hse.gov.uk/pubns/cis80.pdf>

<sup>4</sup> NFRC Helpdesk:

020 7638 7663 option 1

[helpdesk@nfrc.co.uk](mailto:helpdesk@nfrc.co.uk)

---

Published by

**NFRC**

020 7638 7663

[info@nfrc.co.uk](mailto:info@nfrc.co.uk)

[www.nfrc.co.uk](http://www.nfrc.co.uk)

@TheNFRC

May 2021

  
LEADING ROOFING EXCELLENCE

**Note:** Although care has been taken to ensure, to the best of our knowledge, that all data and information contained herein is accurate to the extent that they relate to either matters of fact or accepted practice or matters of opinion at the time of publication, NFRC, the authors and the reviewers assume no responsibility for any errors in or misrepresentations of such data and/or information or any loss or damage arising from or related to their use. Data and information are provided for general guidance only and readers must always take specific advice in relation to the use of materials, techniques and/or applications.